



we build smart and safe cities

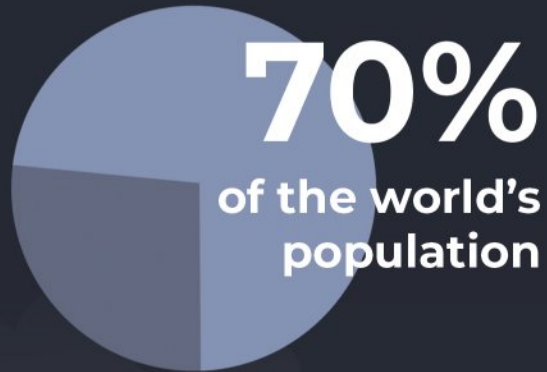


**SEEDiA** is a company from the Smart City area offering intelligent elements of urban infrastructure equipped with off-grid photovoltaic installations, such as: charging stations for electric scooters, solar bus shelters, intelligent litter bins, solar benches and solar kiosks.

SEEDiA products are already used by over 120 cities in 30 markets around the world. Our energy management system based on off-grid installations helps cities to make an ecological transformation while saving time and money on assembly works and changing small architecture to mobile and autonomous.

InCity.io - our platform for managing a smart city - allows you to remotely supervise devices and view the data collected by them in real time. Thanks to InCity.io it is possible, among others calculating CO<sub>2</sub> reduction or controlling multimedia functions or products.





will live  
**in the cities**  
by 2050

according to United Nations

### **Unprofitable public transport**

The lack of appropriate infrastructure and tailored timetables translates into less interest in public transport. Low attendance leads to the liquidation of connections, making your own car more competitive in relation to mass transport.

### **Poor air quality**

Many cities are struggling with air pollution. Poor air quality has a negative impact on health. It is then advisable to limit outdoor activities. Especially vulnerable people include the sick, the elderly and children.

### **Lack on charging stations**

Modern cities are having more and more electronic devices in public areas: electric bikes, scooters, cars, mobile phones, cargo - bikes, drones. To be ready to fulfill ecological transformation, cities need to change public spaces.



# Case study

- 30% increase brand recognition
- detection of dangerous events
- broadband WiFi network
- analysis of user traffic

Toronto



# Solar benches

01



# Future

01

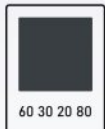


## solar bench

---

Designed for the future. The design, based on simplicity and universal design, ensures intuitive use. It fits well in modern urban spaces and industrial interiors.

Colored LED side lighting plays a design role and can be color-matched to the space.



R: 56 G: 62 B:66  
Hex: #383e42

**RAL 7016**

grey anthracite / mat



**Axalta F2997**

Champagne / gloss

# City Classic

01

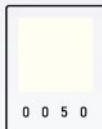


## solar bench

City is the simplest solar bench in the design line. It features a dynamic shape and a clean in form, intriguing design. The solar panel is located in the seat, making full use of solar energy, regardless of the direction of installation. The product will be perfect as a simple bench for parks or city squares.



R: 56 G: 62 B:66  
Hex: #383e42  
**RAL 7016**  
grey anthracite / mat



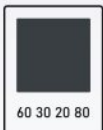
R: 241 G: 240 B: 234  
Hex: #f1f0ea  
**RAL 9016**  
traffic white / mat

# City Bike

01

## solar bench

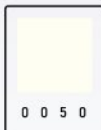
Equipped with bicycle racks, it will prove useful both in parks and near busy bicycle routes. The shape of the stand is in line with the City series design.



R: 56 G: 62 B:66  
Hex: #383e42

**RAL 7016**

grey anthracite / mat



R: 241 G: 240 B: 234  
Hex: #f1f0ea

**RAL 9016**

traffic white / mat





# City

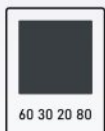
01



## solar bench

---

SEEDiA City's flagship solar bench, apart from its unique urban design, is characterised by its modular construction, thanks to which we can create up to 3 configurations of an intelligent bench from basic elements: a simple one without a backrest, a classic one with a backrest or a bench with integrated bicycle racks. Its functionality is highlighted by LED lighting.



R: 56 G: 62 B:66  
Hex: #383e42  
**RAL 7016**  
grey anthracite / mat



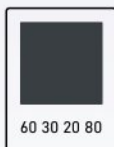
R: 241 G: 240 B: 234  
Hex: #f1f0ea  
**RAL 9016**  
traffic white / mat

# New Urban<sup>01</sup>

## solar bench

---

The latest installment in the popular Urban series. This year's model was designed from the ground up. Thanks to its modular design it becomes an even more effective tool in solving urban problems. The seat has been equipped with wooden elements for an even better user experience.



R: 56 G: 62 B:66  
Hex: #383e42

**RAL 7016**

grey anthracite / mat

# New Urban Basic

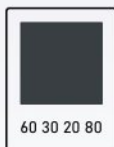
01



## solar bench

---

This year's entry-level model of the Urban series. As in the case of New Urban, the structure of the bench is modular and the seat and backrest are equipped with wooden elements. The distinguishing feature of the BASIC version are open sides.




R: 56 G: 62 B:66  
Hex: #383e42

**RAL 7016**

grey anthracite / mat

# Functionality



	modular construction	USB socket	inductive charger	LED lighting	speaker	branding (advertising)	WiFi hotspot	smog sensor	temperature sensor	battery	remote management	cooling	advertisement in mobile application
Future	●	x 4	x 2	RGB	✓	✓	✓	✓	✓	44 Ah	✓	✓	✓
City Classic	✓	x 2	✓	✓	✓	✓	✓	✓	✓	32 Ah	✓	●	✓
City Bike	✓	x 2	✓	✓	✓	✓	✓	✓	✓	32 Ah	✓	●	✓
City	✓	x 2	✓	✓	✓	✓	✓	✓	✓	32 Ah	✓	✓	✓
New Urban	✓	x 2	✓	✓	✓	✓	✓	✓	✓	44 Ah	✓	✓	✓
New Urban Basic	✓	x 2	✓	✓	✓	●	✓	✓	✓	44 Ah	✓	✓	✓

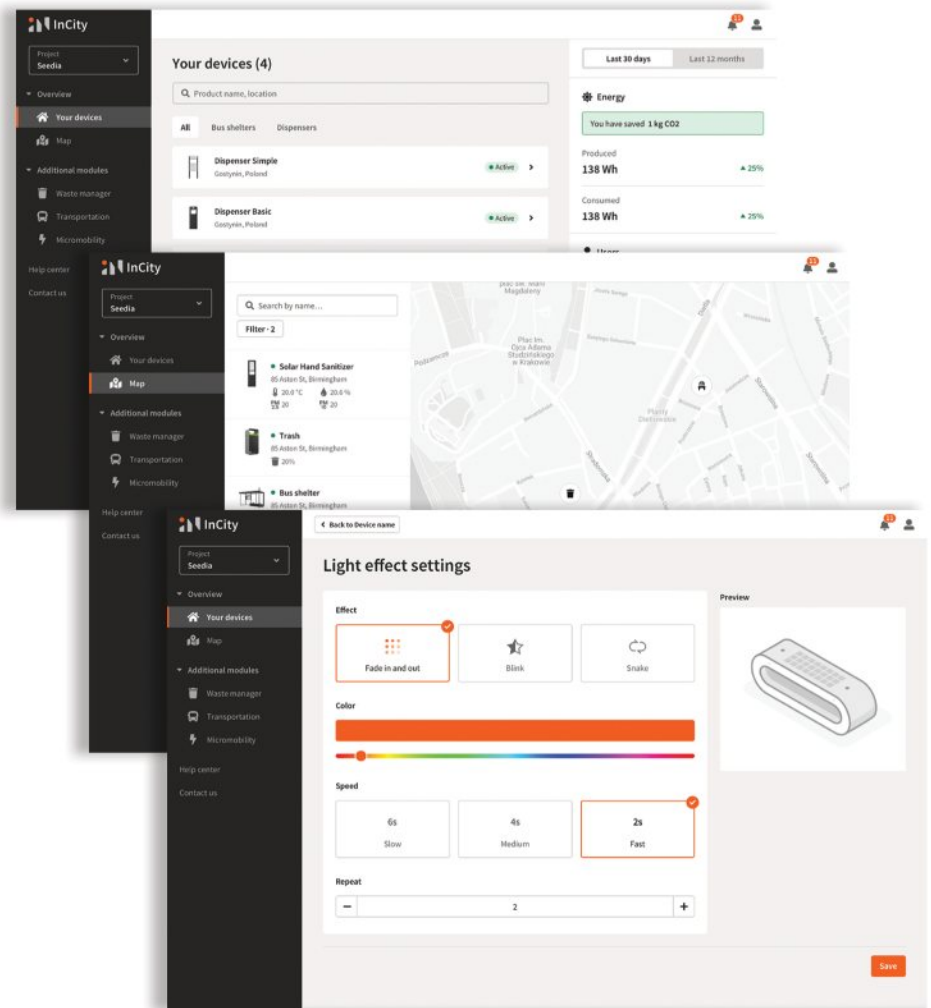
# InCity

## basic module

We have developed a modern and fully flexible platform for managing smart cities, introduce a completely new look and feel to the client panel, which is now easier to navigate, clearer and more intuitive.

One tool allows you to manage all your products. Thanks to open API it is also possible to integrate the platform with external products of other producers.

New energy charts - periodic summary of energy circulation data and graphical representation of the number of users.



# Case study

- energy autonomous devices
- temperature measurement
- verification of the mask on
- increased security
- access control
- statistics date

 **Bielsko-Biała**



# InfoKiosk

02



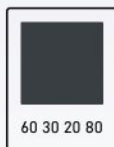
# InfoKiosk

02



with hand sanitizer

Designed to perform the function of both the dispenser and the city information point. The device is equipped with a remotely managed e-paper screen and voice information system. This product is ideal for public transport points, railroad stations, airports or office buildings. It is a solution for places with heavy traffic, where access to information is essential and hand disinfection is necessary to maintain hygiene and health.



R: 56 G: 62 B:66  
Hex: #383e42

**RAL 7016**

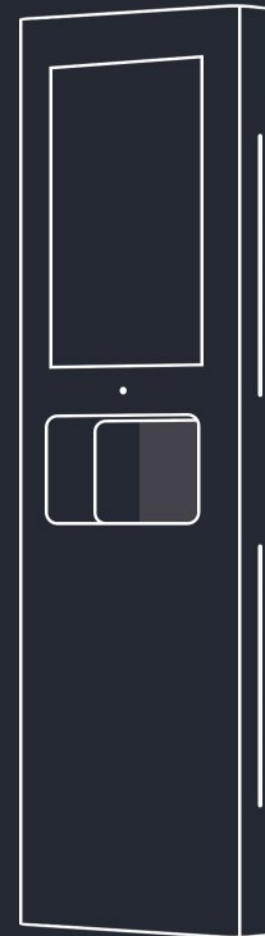
gray anthracite / mat





# Functionality

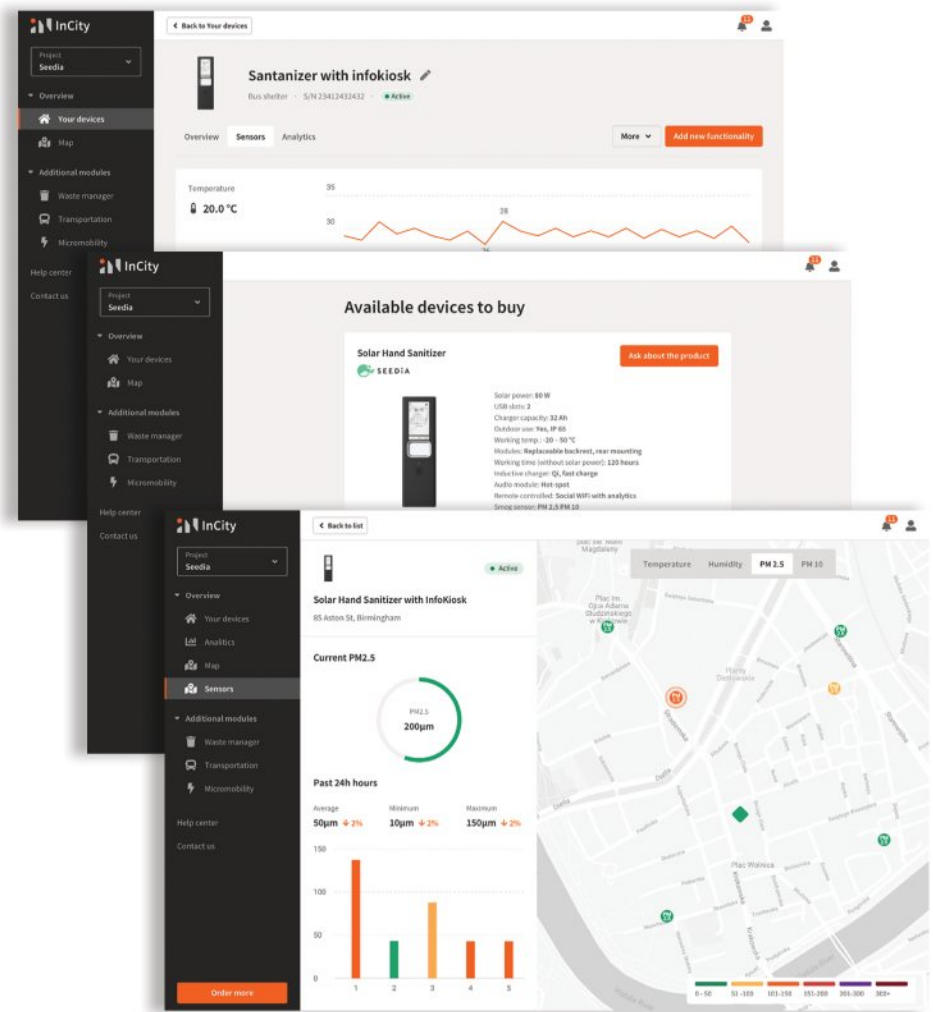
- ✓ rust protection
- ✓ automatic dispenser
- ✓ 10 l liquid container
- ✓ liquid level sensor
- ✓ 90 W photovoltaic panel
- ✓ battery capacity 44 Ah
- ✓ GPS
- ✓ one-year warranty
- ✓ 31.2" e-paper display
- ✓ audio module
- ✓ remote management



# InCity

## Basic module

- remote monitoring of the device status
- analysis of the number of users
- maps with gps location
- color management of LED lighting
- content management on e-paper displays
- management of audio messages
- view of data from air quality, humidity and temperature sensors



# Case study

4 solar autonomous  
bus shelters:

- 5-7k \$ savings on installation
- \$1,300 - \$1,800 energy savings / year - solar energy
- \$1,100 - \$1,300 savings on operation / year - remote management
- energy autonomy

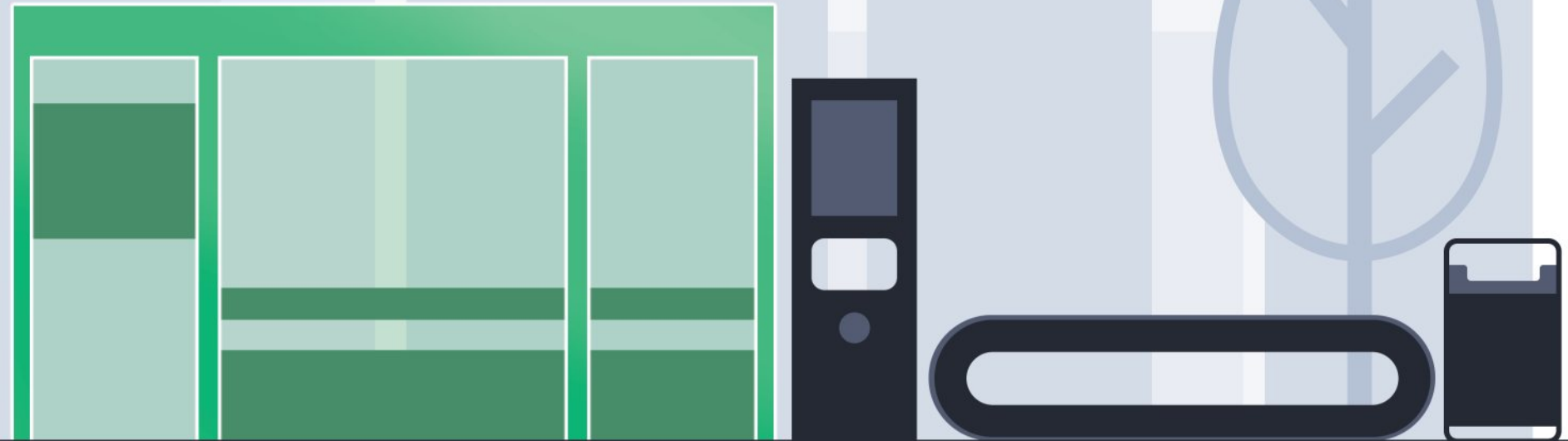


Gdynia



# Public Transportation

03



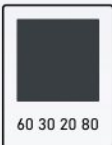
# Solar shelter

03



smart bus shelters with remote management

Energy-independent urban devices providing residents with information and multimedia functions, while protecting them against external weather factors. Thanks to a special controller for energy management and communication with the cloud, the carport is able to work in the field all year round, regardless of the amount of sun reaching it. Integrated chargers for mobile devices, intelligent LED lighting, speakers, e-paper displays and intelligent hot-spots enable communication with passengers in real time and improve the efficiency of municipal services.



R: 56 G: 62 B:66  
Hex: #383e42

**RAL 7016**

gray anthracite / mat

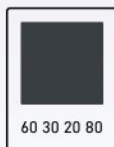
# Solar pole

03

with passenger information

---

Due to the fact that it is not possible to replace the existing urban infrastructure, such as bus shelters, everywhere, we have designed a solar pole with an E-paper display. The product works with the InCity.io platform, which enables remote management and changing timetables both in the shelters and on solar posts.



R: 56 G: 62 B:66  
Hex: #383e42

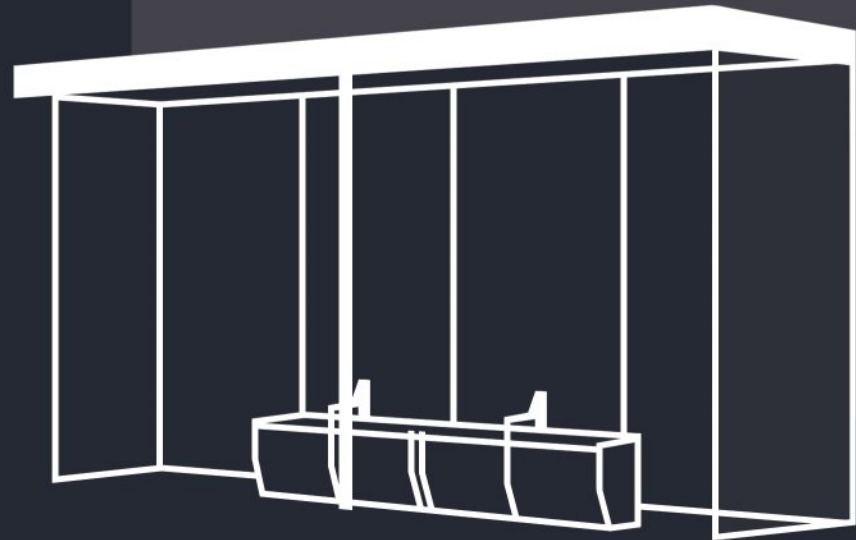
**RAL 7016**

gray anthracite / mat



# Functionality

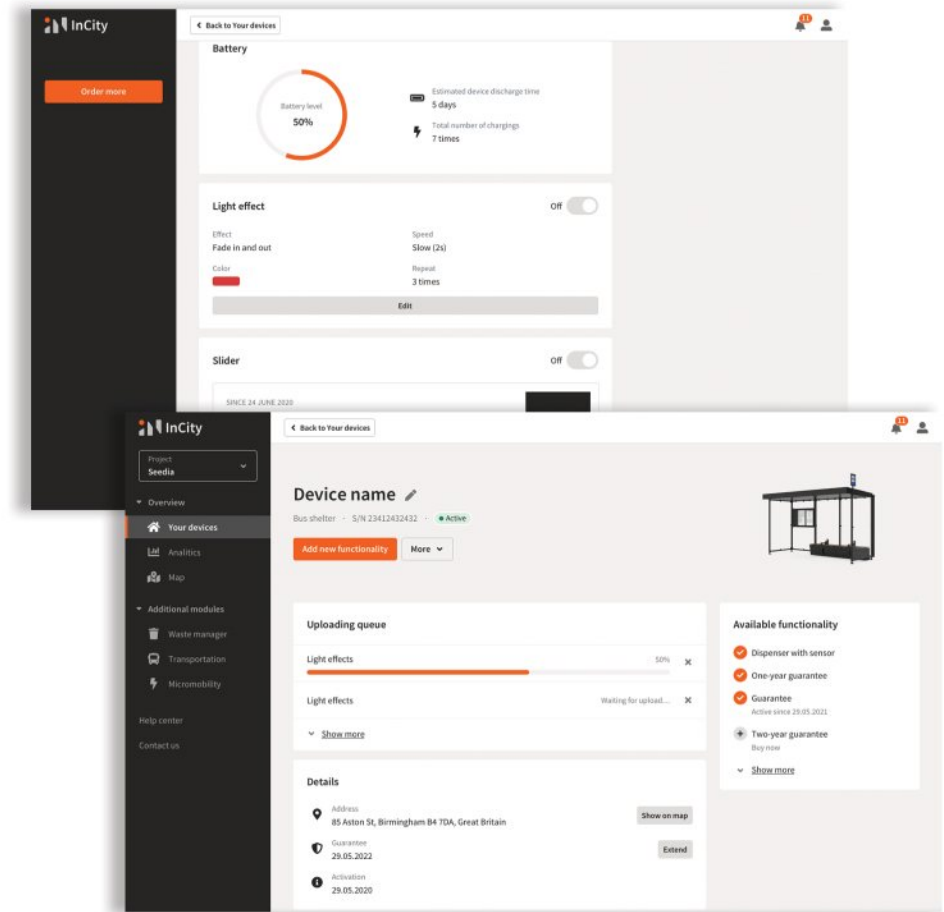
- ✓ modular construction
- ✓ USB charger
- ✓ inductive charger
- ✓ RGB LED lighting
- ✓ speaker
- ✓ 31.2" E-paper display
- ✓ branding (advertising)
- ✓ WiFi hotspot
- ✓ smog sensor
- ✓ dusk sensor
- ✓ advertisement in mobile application
- ✓ remote management



# InCity

## Public Transportation module

- creating communication tunnels for stops
- creating timetables for updating timetables
- automation of mass uploading of timetables
- analysis of the number of passengers per day





# Case study

- promotion of the ecological image of the city
- statistic data
- energetically autonomous devices
- cost reduction for vehicle operators

Cracow



# Charging station

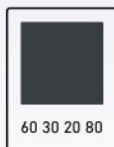
electromobility



# jCharge

## electromobility charging stations

The charging station for scooters and electric bikes is a fully modular and autonomous product, designed for the development of micro-electromobility in cities. Operation without external power supply is possible thanks to efficient solar panels. By default, the station consists of 4 charging stations in the form of 2 low and 2 high posts. Each mast is equipped with a universal vertical slot that alternatively also allows the bicycle to be docked. The stands have two-sided grips that stabilize the scooter handlebar.



R: 56 G: 62 B:66  
Hex: #383e42

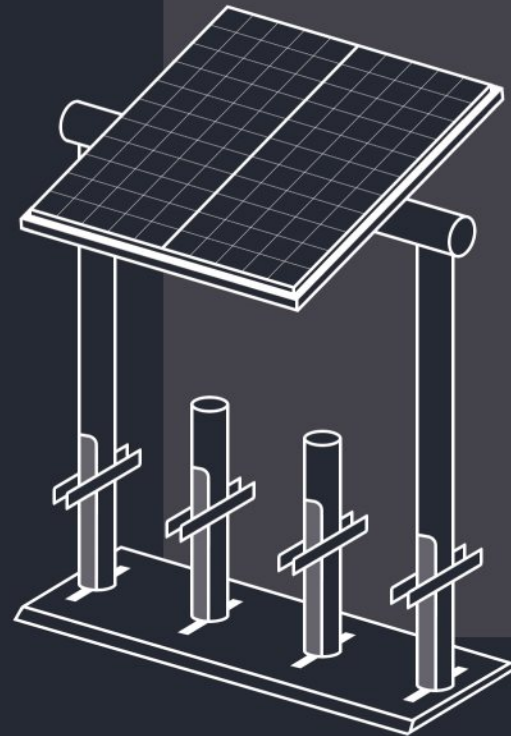
**RAL 7016**

gray anthracite / mat



# Functionality

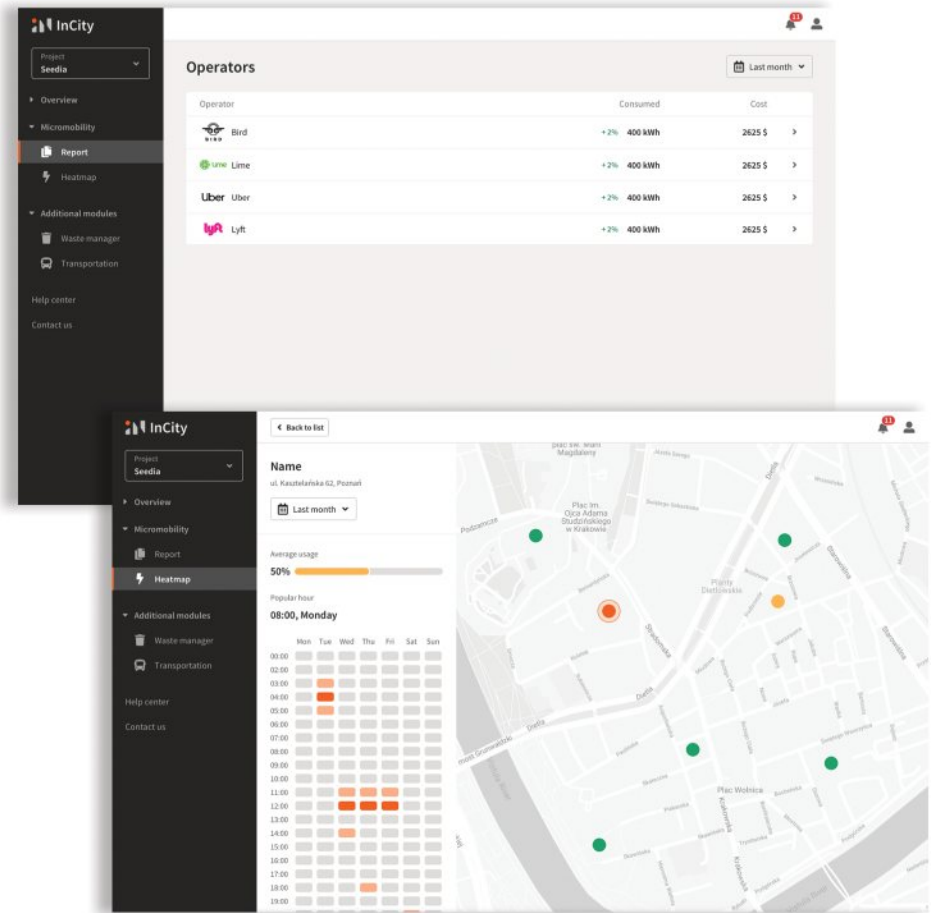
- ✓ modular construction
- ✓ versatility
  - possibility of charging various scooters and electric bikes
- ✓ autonomous operability
- ✓ remote management



# InCity

## Electromobility module

- adding municipal electromobility operators
- automatic generation of invoices per operator / per station
- heat map of station use
- color management of LED lighting
- analysis of the daily use of the station
- economic analysis of the station



# Transport 4.0

with SEEDiA products

Transport 4.0 means a new - better quality of getting around cities. It is easier access to sustainable mobility and the introduction of automation elements to the public transport infrastructure.

The combination of a solar powered shelter with a charging station for electric scooters makes it easier to overcome the so-called last mile - the road section to the public transport stop and from the stop to the final destination.

- remote system management
- automation of timetable management
- solar power
- support for green mobility in cities
- increasing the comfort of movement



# Off-grid

photovoltaic installations

---

high deployment mobility

short installation time

zero emissions

energy independence

autonomous operability



SEEDiA products

high cost of installation

cable connections

difficulties in making larger installations

long waiting times for the necessary permits



basic city furniture

# Purchase models



purchase of a SEEDiA product

purchase of the InCity platform  
with monthly / yearly fees



SEEDiA product rental

long-term subscription  
to the InCity platform

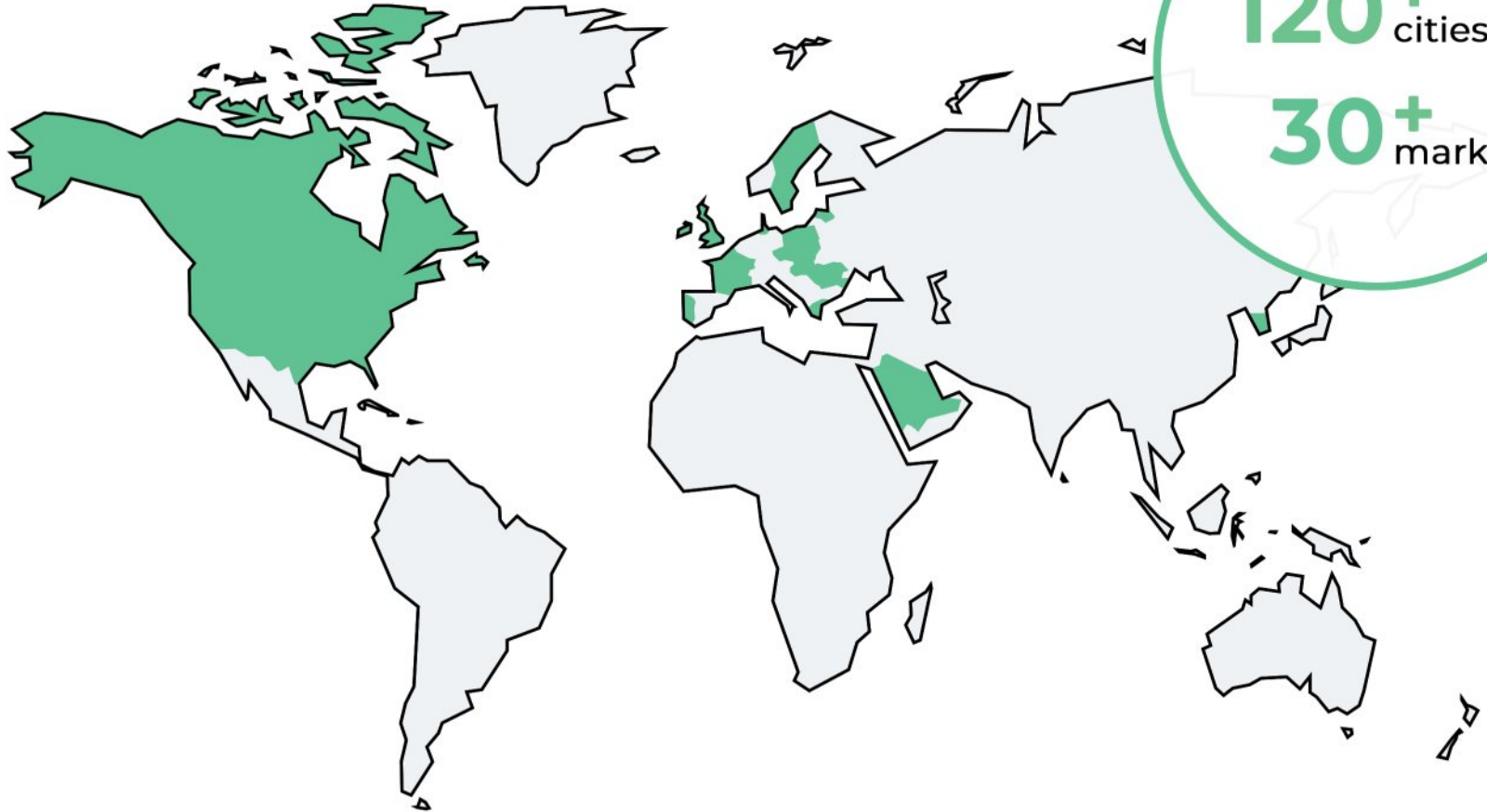




# Implementation map

SEEDiA products

---



120+ cities

30+ markets

Europe - Poland, United Kingdom, Hungary, France, Greece, Ireland, Czech Republic, Latvia, Portugal, Romania, Sweden, Denmark, Slovakia, Moldova

North America - Canada, USA  
Asia - Saudi Arabia, South Korea

# Testimonials

“As part of the civic budget, a SEEDiA solar bench was installed in the Błaszki commune. It met with interest from the residents. This type of low-emission solutions can be recommended to others who would like to introduce them in their municipality.”

” **Karol Rajewski**  
mayor of Błaszki

“Based on the order dated 06.06.2018 concluded between Przedsiębiorstwo Komunalne Sp. z o. o. in Wronki and SEEDiA Company, a solar bench manufactured by Seedia model City Classic was installed in the city of Wronki. The bench, which offers users the possibility to charge their mobile devices, has met with an enthusiastic response from the residents of our city and the favor of the city authorities.”

” **Rafał Zimny**  
president of the Management Board of Przedsiębiorstwo Komunalne Spółka z o. o. in Wronki

In Ustroń, 5 pieces of smart solar benches by Seedia were put into use. They enable the residents to relax outdoors and use the function of ecological battery charging in mobile devices. The investor has chosen models from the Seedia Urban family (Classic and Bike), which, thanks to the combination of wood and metal, perfectly fit into the existing architecture.

” **Jarosław Szpadel**  
owner of P.P.U.H. WASP - BUD

“We chose SEEDiA due to its intriguing product design, flexible approach to the client’s needs and most extensive offer of indoor and outdoor devices. We also take under consideration fact, that we are supporting a young, Polish company which offer is compatible with our long-term plans.”

” **Andrzej Wiśniewski**  
head of the Department of Promotion and Development of Gostynin Authority Office

“Solar benches have been installed by Przedsiębiorstwo Robót Inżynieryjnych "Duda" Grażyna Duda within the realization of "Revitalization of the Market Square in Limanowa through development of public space for social purposes" project. The aesthetics of the benches perfectly fit into the revitalized urban space and their functionality is very useful for the inhabitants as well as for the numerous tourists visiting Limanowa.”

” **Grażyna Duda**  
owner of Przedsiębiorstwo Robót Inżynieryjnych "DUDA"

“On 02/26/2019, SEEDiA Sp. z o.o. has installed smart solar benches in the city of Szamotuły. In addition, a sensor for measuring air quality was installed in one of the benches. The location of the benches in the Castle Park in Szamotuły met with a positive response from residents who are eager to use the opportunities offered by the installed devices.”

” **Włodzimierz Kaczmarek**  
mayor of the City and Commune of Szamotuły

# Customers

service  
premises

universities

municipalities  
and cities

shopping  
centers

stations  
and airports



Partners:



Greentown Labs

budimex



Microsoft



InnoEnergy

SKANSKA



# Certificates



## **IK09 declaration**

Standard defining the degree of resistance of electrical devices to impacts. IK09 means resistance to an impact energy of 10J (joule).



## **IP55**

The standard specifying the class of the tightness of the product. IP55 means the product is completely dust-tight and highly waterproof.



## **Registration in Community design**

Right to EU industrial designs. All of our seven products have been registered.



## **CE declaration**

The product meets the requirements of the EU "New Approach" directive. All our products have CE declarations.



## **Declaration of non-flammability**

Risk assessment of potential fire hazard.



## **ISO 9001:2015**

International standard that specifies the requirements of an organization's quality management system.



ISO 9001  
LL-C (Certification)

IP 55

# Achievements



Special mention  
**Microentrepreneur  
of the year 2017**



Competition finalist  
**Good design 2018**  
Solar bench City Classic



Recommended product  
**Good design 2018**  
Solar bench Future



Finalist "Urban Environment"  
**8. Smart City Expo  
in Barcelona**  
SEEDiA Future City  
ecosystem in Cracow



**Carbon Footprint  
Summit 2020**  
innovations  
in public space



**The K-Startup  
Grand Challenge 2020**  
TOP 30 teams



Green Product of the Year  
**PLGBC Green Building  
Awards 2018**  
Solar bench Future



Competition finalist  
**Good design 2020**  
Line of disinfecting  
liquid dispensers



Orange Fab  
**Best Startup 2018**

# Contact



Seedia Sp. z o.o.  
ul. Bociana 22  
31-231 Krakow  
Poland



[office@seedia.city](mailto:office@seedia.city)



+48 531 607 770



[www.seedia.city](http://www.seedia.city)

**Paweł Smołka**

International Key Account  
Manager & Sales Manager

[pawel@seedia.city](mailto:pawel@seedia.city)

+48 737 163 773

